

Typ 3 624 04

Škoda Octavia III. 2013 →

Milotec®

Liftomat für Motorhaube • Plynové vzpěry kapoty motoru
 Liftomat for engine hood • Liftomat pour capot moteur

Montageanleitung • Montážní návod • Fitting instructions • Instructions de montage

Lieferumfang:
 Inhalt balení:
 The pack contains:
 Fournitures:

Ⓐ 2 x

Ⓑ 2 x

Ⓒ 2 x

Ⓓ 4 x M8

Ⓔ 4 x 8,2

Ⓕ 1 x

Montageanleitung
 Montážní návod
 Fitting instructions
 Instructions de montage



Wichtiger Hinweis: der Liftomat steht unter Druck, deshalb darf der Druckbehälter nicht beschädigt werden.



Pozor! Plynová vzpěra je pod stálým tlakem. Tělo plynové vzpěry nesmí být poškozeno.



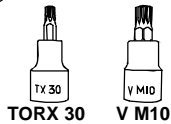
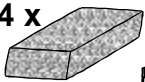
Important note: the pressure tank must not be damaged as the Liftomat is under pressure.



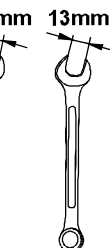
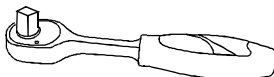
Note importante: Le Liftomat est sous pression, le réservoir à pression ne doit donc pas être détérioré.

Werkzeuge • Nářadí • Tools • Outils

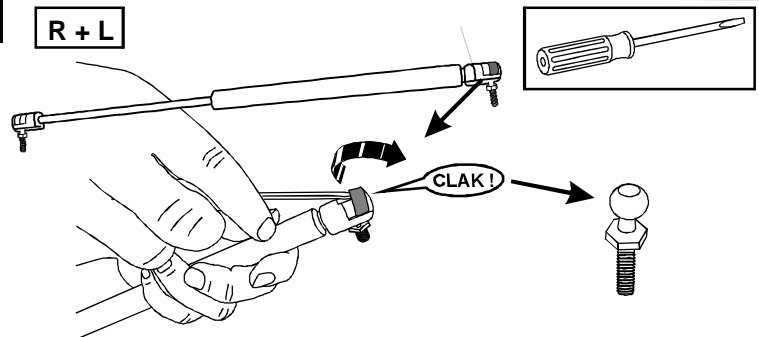
4 x



TORX 30 V M10

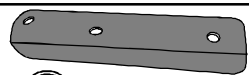


1. R + L



2. R + L

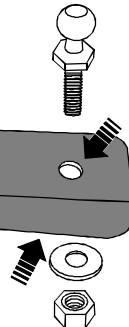
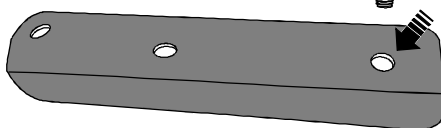
2 x Ⓑ



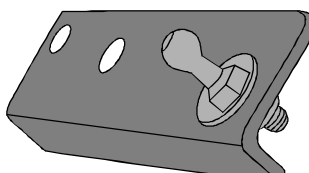
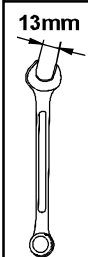
2 x Ⓓ



2 x Ⓔ



13mm



3. R + L

